

Simos PCR Tool

This tool its designed to use Tactrix Openport 2.0 J2534 Device, other devices are not tested so maybe bit working properly.

With this tool you have this option available to use:

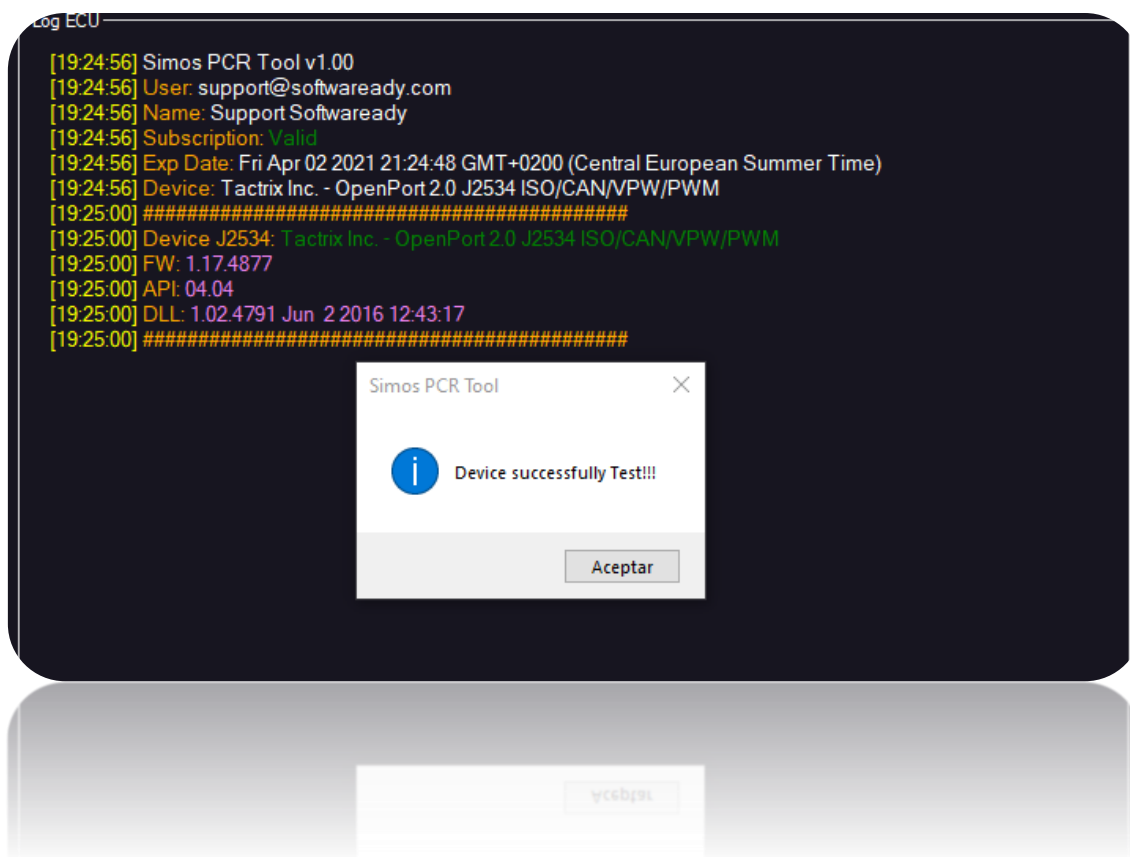
- Read/Edit Immo Data via OBD2
- Read/Edit Immo Data via Eeprom
- Read/Write Full flash via Bootloader
- Read Password from ECU via OBD2
- Read/Write Eeprom via Bootloader
- Unlock Eeprom
- Restore Original Firmware from Factory

-HOW TO INSTALL AND CONFIGURATION

Go to Web panel <https://softwaready.com> login or register, then go to Simos PCR Tool and download, this will download zip file with all necessary files to work.

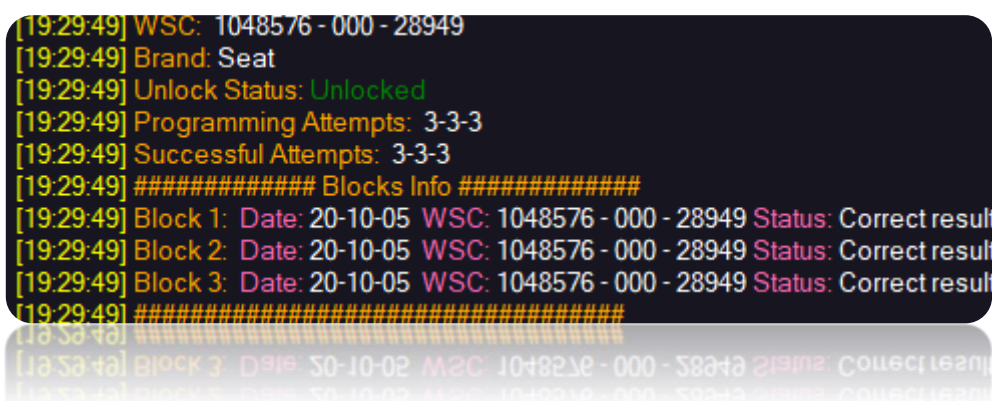
Inside this zip you'll find, exe installer and zip with SSL certs to work with program-

- 1.-First install the program.
- 2.-Unzip SSL zip, and put these 3 SSL certs in the same folder from you have installed the exe program.
- 3.-Now Open program, in main screen you'll see **"USER"**, now load the SSL certs you unzip in previous step.
- 4.- Now insert your email and password and press login, if all its OK you'll see your data here and license status in the Main Screen.
- 5.-Now close this screen and back to Main screen, connect your Tactrix Openport ,select the device and press TEST, if all its correct you'll see all the information about your J2534 Device, so now all its ready to work.



-OBD2 OPTIONS

ATTENTION!!!, to use this tool the ECU must be in **UNLOCKED** state, you can check it if you try any option via OBD2.



If your ECU show **LOCKED** you need to unlocked via BOOTLOADER.

- READ IMMO DATA

This Option show the actual immo data CS, PIN, MAC, VIN and IMMO ID from the ECU, this data its necessary for example to change immo data, because you need to know actual immo data to put new immo data in ECU.

To read this immo data, Firmware Patch need to install in ECU, so when you try to read this data if not possible warning will show saying you need to patch firmware.

```
[19:38:08] #####
[19:38:08] Connecting to the server, please wait ...
[19:38:08] Reading Immo Data, please wait ...
[19:38:08] Entering in Development mode ...
[19:38:08] Development mode: OK
[19:38:08] Requesting Access ...
[19:38:08] Access: OK
[19:38:08] Reading Immo Data, please wait ...
[19:38:13] Read: OK
[19:38:13] Processing Immo Data, please wait ...
[19:38:13] #####
[19:38:13] VIN: 
[19:38:13] IMMO ID: 
[19:38:13] CS: B26CB36F64D9
[19:38:13] PIN: 26676
[19:38:13] MAC 1: 02C2
[19:38:13] MAC 2: 4259
[19:38:13] #####
[19:38:13] Elapsed time: 00:00:05

[19:38:13] Elapsed time: 00:00:02
[19:38:13] #####
[19:38:13] WVC 5: 4528
[19:38:13] WVC 1: 05C5
[19:38:13] WVC 2: 05C5
```

-CHANGE IMMO DATA

This option can change the immo data from ECU and sync this IMMO data too in cluster.

First press get actual Immo data to read Immo Data from ECU. Actual data automatically will fill the boxes, so now only need to put your desire data you want to put. If cluster its detected immo data will sync with cluster too, if not only immo data its sync in ECU.

Actual Immo Data

CS

B26CB36F64D9

PIN

26676

PC

3A

New Immo Data

CS

111111111111

PIN

22222

VIN

3333333333333333

IMMO ID

44444444444444

Log ECU

[20:03:37] PartNumber: 03L906023BF

[20:03:37] Brand: Seat

[20:03:37] Request Immo Challenge, please wait ...

[20:03:38] Immo Challenge: OK

[20:03:38] Connecting to the server, please wait ...

[20:03:38] Calculating new Immo in server, please wait ...

[20:03:38] Calculated: OK

[20:03:38] Changing data, please wait ...

[20:03:39] ECU data change: OK

[20:03:39] Check if cluster installed, please wait ...

[20:03:39] Speed: Auto - (Automatic Delay)

[20:03:39] Battery PC: 100%

[20:03:40] Error!!! 0x16 Cant connect to Module , please check module.

[20:03:43] Cluster not detected, impossible to sync cluster with ECU ...

[20:03:43] Elapsed time: 00:00:05

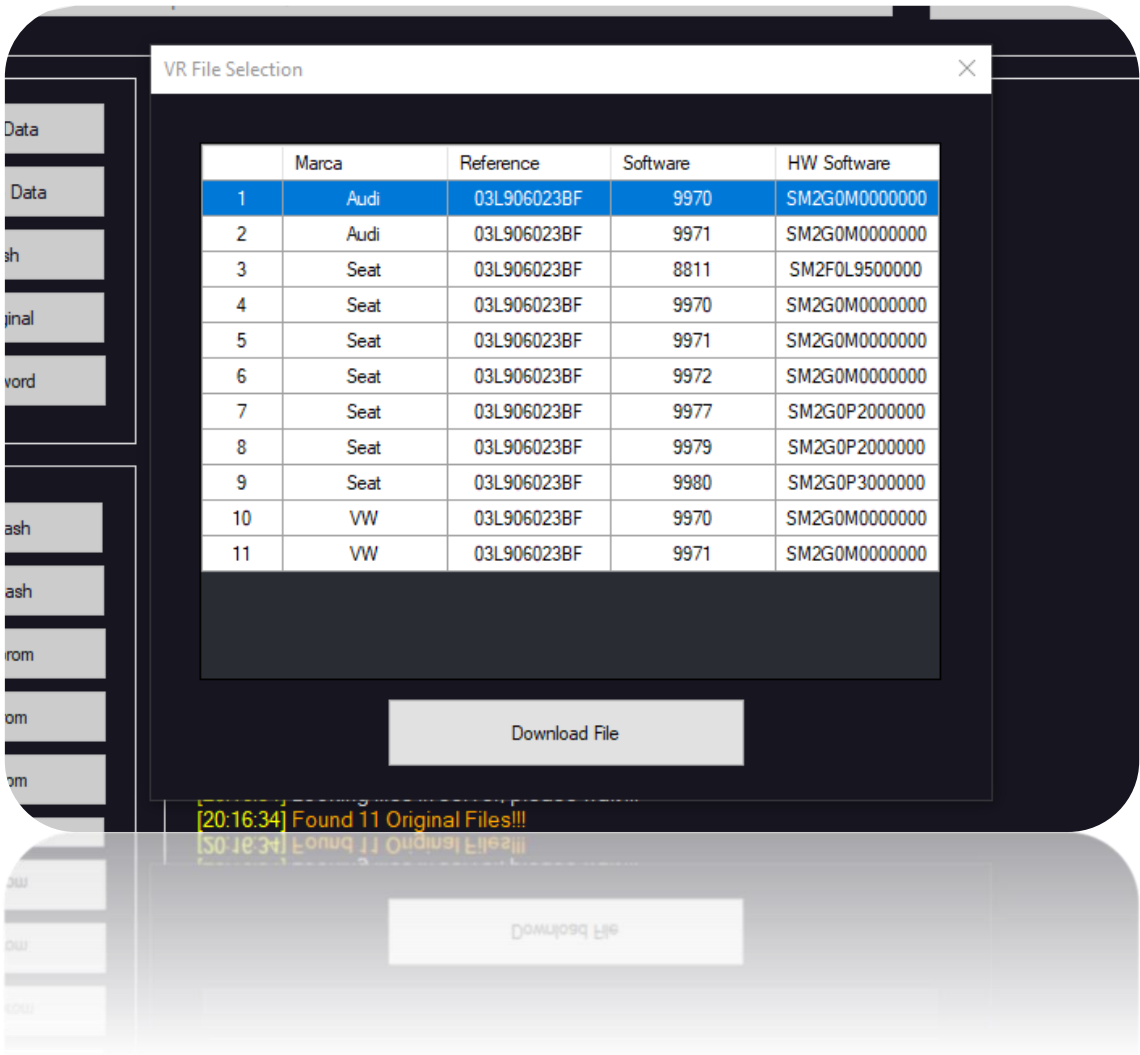
If you see MAC1 : 0000, you need to sync with cluster, so need to follow previous step with cluster installed ,if not have cluster use EDIT IMMO EEPROM, this way you can put any MAC1 you want, so not need cluster.

```
[20:10:05] #####
[20:10:05] VIN: 3333333333333333
[20:10:05] IMMO ID: 44444444444444
[20:10:05] CS: 111111111111
[20:10:05] PIN: 22222
[20:10:05] MAC 1: 0000
[20:10:05] MAC 2: 4259
[20:10:05] #####
[20:10:05] Elapsed time: 00:00:05

[20:10:02] Elapsed time: 00:00:02
[20:10:02] #####
```

-PATCH FLASH

This Option install Custom Patch to read Immo data and password from ECU.



-RESTORE ORIGINAL

This Option restore Original firmware from factory, you only need to select the firmware you want to install.

-READ PASSWORD

This option will read and generate bin file with the actual Password from ECU, this password its necessary to read and write full ECU via Bootloader.

-BOOTLOADER OPTIONS

To use these options, you need to put ECU in Bootloader mode, you can search via browser how to put it in bootloader mode.

I recommend to connect ECU in BENCH with this cable, works perfect.

<https://chiptuningshop.com/product/universal-ecu-pinout-cable/>

And this is the connection pinout of the ECU:

12V+: 5,87 and 92

If have cable I recommend previously connect **GREEN KLINE** Cable in PIN 87 not 12V, This way program can handle automatically ECU resets, if not you have to make it manually, each time you use any boot option, so need to ECU OFF/ON each time you use any option.

GND: 1

CANH: 68

CANL:67

With ecu in bootloader mode and connected you can use these options.

-READ FULL FLASH

This option can read full flash of the ECU OTP areas include, so you can keep a full backup of the ECU if anything goes wrong.

To use this option, you need to have the PASSWORD of the ecu, this password you can read via OBD2, and this will generate Bin file with password to load when you want to read the ECU.

-WRITE FULL FLASH

This option can write full file back to ECU.

ATTENTION!!!, this option not repair CHK in file only restore file previously read.

To use this option, you need to have the PASSWORD of the ecu, this password you can read via OBD2, and this will generate Bin file with password to load when you want to write the ECU.

-UNLOCK EEPROM

This is only necessary to use one time, if your ECU its LOCKED, press unlock and this way the eeprom will change the status to UNLOCK.

If you press again the ECU will back to previous state, so if your ecu its unlocked ecu will back to locked and vice versa.

-READ EEPROM

You can make full read if the EEPROM

-WRITE EEPROM

You can make full write of the EEPROM

ATTENTION!!!, this option not repair CHK in file only restore file previously read.

-EDIT IMMO DATA

This option its really helpful if you are working with ECU in BENCH and not in the car.

To use this option, you need to have previously the actual data of the immo data of the ECU, so then you can put any value you want to write new immo data and new eeprom will generate.

-HOW TO CLONE ECU

Work with Original ECU

Step1:

Connect Original ECU to program via OBD2 and try to read immo data, if your ECU its UNLOCKED, program will read the immo data if ECU its LOCKED, program going to alert you need to patch ECU first to make this.

To make this only need to connect ECU in bootloader and press Unlock Eeprom, this way ECU going to be in UNLOCKED state.

Now connect again ecu in OBD2 mode and press Patch Flash, now select the firmware you want to use and write. When finish now press again read immo data, now going to show the actual immo data from the ECU.

VIN:1111111111111111

IMMO ID:222222222222

CS:333333333333

PIN:44444

MAC1:5555

MAC2:6666

Now copy this data and work with Original ECU its finish, now work its in Replace ECU.

Work with Replace ECU

Step1:

Connect Replace ECU to program via OBD2 and try to read immo data, if your ECU its UNLOCKED, program will read the immo data if ECU its LOCKED, program going to alert you need to patch ECU first to make this.

To make this only need to connect ECU in bootloader and press Unlock Eeprom, this way ECU going to be in UNLOCKED state.

Now connect again ecu in OBD2 mode and press Patch Flash, now select the firmware you want to use and write. When finish now press again read immo data, now going to show the actual immo data from the ECU.

VIN:7777777777777777

IMMO ID:88888888888888

CS:99999999999999

PIN:10101

MAC1: AAAA

MAC2: BBBB

Step2:

Now press Change Immo Data and press Get actual immo data, program going to read again immo data and going to fill the Boxes in "Actual Immo Data" ...

Now put the data from original ECU we extracted ORANGE data CS, PIN, VIN and IMMO ID and press Change Data ECU, this will write this new data to replacement ECU.

Now you can press again Get Actual Immo Data and you can see you have same immo data from Original, and Mac 1 and Mac 2 are matched to cluster and ECU so your clone ecu its ready to work.

ATTENTION!!!, if you use this without connection in cluster you are going to see this:

MAC1: 0000

This is because need to match with cluster, so connect ECU and cluster and follow Step 2, ecu and cluster going to match. With MAC1: 0000 car not start.

If you don't have cluster in hand you need to use "Boot option -> Edit Immo Eeprom".

You need to Follow these steps:

Boot Step 1:

Connect Replace ECU in boot mode and read eeprom, now press Edit immo eeprom and in Actual immo data you have to put actual data for replacement ECU (Green Data), and New Immo Data the Original Data from the ECU (Orange Data), press change data in eeprom and program going to generate new eeprom with new data...

Now write this new eeprom and all its ready.

Connect again ECU in OBD2 mode and press read immo data, so now you are going to see MAC 1 its matched. So all its ready.

Step3:

Now with ECU clone you can remove patched firmware from ECU, only need to press restore to original and select the firmware you want to install, this going to write Factory firmware.

And Done!!